



JOHN
RUSKIN
COLLEGE

ORBITAL SOUTH COLLEGES

2025-26

FULL-TIME COURSE GUIDE

Be Amazing

VOCATIONAL COURSES

ESOL

T LEVELS

APPRENTICESHIPS

Apply for your place today!



CONTENTS

OUR COURSES

Access to Higher Education	22
Animal Management	24
Business & Finance	26
Construction Trade Skills	28
Creative Arts	30
Digital & IT	32
Early Years & Childcare	34
Engineering	36
Hair, Beauty, Make-Up & Spa	38
Health & Social Care	40
Skills For Life – ESOL	42
Skills For Life – SEND	44



HELPFUL INFORMATION

Hello & Welcome	3
Why Choose JRC?	4
How We Support You	6-7
Fees & Finance	8-9
Courses & Qualifications	10
How to Apply	11
English & Maths	11
GEMS	11
Your Study Programme & Entry Requirements	12-13
College Life	14-15
T Levels	16-17
Apprenticeships	18-19
Higher Education	20-21
Getting to the College	46
Index	47

HELLO!



Lindsay Pamphilon
Principal

WELCOME TO JOHN RUSKIN COLLEGE

I am so pleased you are looking to apply to study with us after your GCSEs! Our College is an aspirational place to learn with highly skilled, supportive staff and industry standard facilities as well as being a safe place where you can truly be yourself.

Our key focus is you – your education, your success and your future career! We will help you maximise your potential. Whether your ambition is to go straight into the world of work, start an apprenticeship or go to university, we have great links with local and national employers and our Careers team will support you in planning your next steps.

We look forward to welcoming you to our community!

OPEN EVENTS

TUES
17 SEPT
5pm – 8pm

SAT
5 OCT
10am – 1pm

THURS
7 NOV
5pm – 8pm

WED
12 FEB
5pm – 7.30pm

WED
18 JUNE
5pm – 7.30pm

LET'S TALK ABOUT YOUR FUTURE

Choosing a College is a big decision. Our Open Events offer you the chance to visit us and see what College life is all about and:

- ▶ Find out about courses
- ▶ Take a look around
- ▶ Chat to our experienced tutors
- ▶ Help with your application

You can also find out how we support your journey from school through to starting your career.

Book online at
johnruskin.ac.uk/events



WHY CHOOSE JRC? >>>>

Studying at JRC will provide you with a whole range of skills and experiences to prepare you for your next steps, whether you are progressing within education or employment. Here are a few examples of why you should join us:

- ▶ Career focused courses at all levels
- ▶ You can study Maths and English alongside your course
- ▶ Excellent industry-standard facilities and resources
- ▶ Industry trained tutors
- ▶ Wide range of support available
- ▶ Exciting enrichment programme
- ▶ Work experience and industry placements
- ▶ We work closely with many local and national employers
- ▶ Excellent progression into work and further study
- ▶ Learning Resource Centre provides PC access, books and e-resources



EXCELLENT FACILITIES

Our campus provides fantastic teaching and enrichment facilities. Each subject area has dedicated spaces with relevant industry equipment.



HOW WE SUPPORT YOU

Our Student Support teams are here to support your success and help make your time at JRC rewarding and enjoyable.

CLIENT SERVICES

When you apply and enrol at JRC, our dedicated Client Services team will be available throughout the year to help and support you.

They're on hand to offer you impartial information, advice and guidance across a variety of areas, including:

- ▶ Course information
- ▶ Help with your application and enrolment
- ▶ Advice about progression options
- ▶ Financial information, advice and guidance

PERSONAL TUTOR

When you enrol, you'll be allocated a personal tutor who will keep you updated and support you throughout your course to achieve your full potential.

Your personal tutor will help you set goals, give guidance and advice on your career options including Apprenticeships, Higher Education or job applications.



Our Client Services team are always happy to help!
Please call
020 8651 1131

LEARNING SUPPORT

Additional support can be provided if you have an Education, Health, and Care Plan (EHCP), learning difficulty, disability or other support needs – please let us know when you apply.

Support options may include making reasonable adjustments to facilities and resources, access to a learning support assistant or specialist study support sessions.

We can also provide:

- ▶ Access to assistive technology and software
- ▶ Assessments for exam access arrangements
- ▶ Dyslexia screening alongside recommended strategies for independent progress in learning
- ▶ Sensory support for hearing and visual needs
- ▶ Neurodiversity support
- ▶ Quiet space

We also hold a successful autism support group where students socialise and have opportunities to try out new activities.

Let us know your needs by ticking the appropriate boxes on your application form and discussing this fully at your interview.



SAFEGUARDING & WELLBEING

Keeping you safe is our top priority. All our staff are trained in safeguarding to help ensure College is a safe place for you to study. There are many routes for students to access support both in-person and online.

We're committed to promoting the importance of taking care of your mental health and wellbeing.

Our Wellbeing Hub is full of useful links and tips for maintaining your mental health and wellbeing while working and studying.

www.johnruskin.ac.uk/wellbeing-hub



CAREERS ADVICE & GUIDANCE

Our Careers team offer support with career planning and preparing for key steps towards employment and work readiness. Helping you with:

- ▶ Exploring career pathways
- ▶ Improving your job search
- ▶ Identifying your transferable skills
- ▶ CVs & job applications
- ▶ Support with UCAS applications

www.johnruskin.ac.uk/about-careers-hub

FEES & FINANCE >>>>

aged
16-18

If you are aged 16-18 when you join us, your tuition will be FREE!

OTHER COSTS

You may be required to pay a resource fee and educational visit costs, however financial support is available for those who need it (subject to family income).

FINANCIAL SUPPORT

Students from low income households, including those on benefits, may be eligible for financial support through one of our bursary support schemes. Students who are classified as a vulnerable learner may also be eligible.

Following a needs assessment, students may be eligible for financial support towards:

- ▶ Childcare costs
- ▶ Resource/materials fees
- ▶ Kit and uniform
- ▶ Essential educational visits
- ▶ Free school meals
- ▶ Travel expenses
- ▶ Industry placements

Application forms are available at www.johnruskin.ac.uk or from our Bursary Officer, who can provide detailed information relevant to you and will assess your application to see if you are eligible for financial support.

Contact our Bursary Officer for help and advice about student loans, funding or bursaries: ☎ 020 8651 1131 ✉ studentbursary@osc.ac.uk

The College only
accepts cashless
payments

FEES & FINANCE >>>>

aged
19+

If you will be aged 19+ when you join us, you may have to pay tuition fees which vary by course and level, so please contact us for more details.

OTHER COSTS

You may be required to pay a resource fee and educational visit costs, however financial support is available for those who need it (subject to family income).

FINANCIAL SUPPORT

Depending on the qualifications you have already gained, tuition and/or exam fees may be payable. If you are studying your first full Level 2 or 3 qualification, then you may not have to pay tuition or exam fees.

If you have not achieved a full Level 3 qualification and the course you are applying for is on the Skills For Jobs list, then you may also not have to pay tuition or exam fees.

For Level 2 qualification courses and below, you may not have to pay tuition or exam fees if you are unemployed and receiving a state benefit, or you are working and are on a low income (exact criteria to be confirmed by the Education and Skills Funding Agency (ESFA) in May 2025).

If you are studying a Level 3 qualification or higher and are not entitled to any other waivers, you will normally have to pay course fees. Or if available, you can apply for an Advanced Learner Loan which is managed by the Student Loans Company, and further information can be found on their website www.slc.co.uk.

If you are using the Advanced Learner Loan to pay for an Access to Higher Education course, once you have successfully completed your Higher Education course, the Student Loans Company will write off the amount outstanding on the loan.

COURSES & QUALIFICATIONS

We offer a range of courses at various levels across each subject area.

SUPPORTED LEARNING

Entry Level 1 – 3 programmes are designed to support students to progress towards independence – building personal, social and work readiness skills that are vital for daily living.

Supported Internships are structured, work-based programmes. With the support of an expert job coach, students spend typically around 70% of their learning time in a workplace.

VOCATIONAL COURSES

Level 1 – Level 3 courses are designed for those interested in a particular sector or industry, offering a mix of theory and practical learning. These courses will be a great choice for you if you:

- ▶ Prefer practical hands-on learning
- ▶ Prefer work-based assessments rather than exams
- ▶ Want to go direct into employment, further study or an Apprenticeship

T LEVELS

T Levels are the new career-focused qualification which gets students career ready with a focus on work placements and classroom/workshop learning. They are equivalent to 3 A Levels and will help you step straight into your chosen career, Apprenticeship or Degree. See page 16.



APPRENTICESHIPS

As an Apprentice you will be an employee earning a wage, build your skills and gain a nationally recognised qualification. Apprenticeships combine practical on-the-job training with study to develop job-specific skills and knowledge. See page 18 for more information.

ESOL (English for Speakers of Other Languages)

If English isn't your first language, ESOL courses cover speaking, listening, reading and writing. You will be assessed before starting, to ensure you are placed on the right course level.

UNIVERSITY LEVEL COURSES

Students can continue into higher education with us with the benefit of staying local. Orbital South Colleges University Centre offers a range of qualifications including:

- ▶ Foundation Degree (FdA / FdSc)
- ▶ Bachelor's Degree - BA (Hons) / Top-Up
- ▶ Higher National Diploma (HND)
- ▶ Higher National Certificate (HNC)
- ▶ Higher Technical Qualifications (HTQs)
- ▶ Higher and Degree Apprenticeships
- ▶ Professional Courses

HOW TO APPLY

Visit us at an Open Event, check out the information in this guide, visit our website to find a course that interests you.

STEP 1.

apply

Once you have found a subject you would like to study, visit www.johnruskin.ac.uk and:

- ▶ Search for your course of interest
- ▶ Click the **APPLY** button
- ▶ Register for an online account
- ▶ Complete the application form

STEP 2.

interview

After applying, you'll be invited to the College for an INFORMATION, ADVICE & GUIDANCE interview where we'll discuss all aspects of your chosen course.

This is an important opportunity to ensure that this is the right course for you and for us to fully explain the details and requirements of the course.

STEP 3.

your offer

16-18 year olds

If you're successful you'll be offered a conditional place which will be confirmed during enrolment when you provide your exam results.

Adult students

with appropriate qualifications are usually offered unconditional places.

STEP 4.

enrol

You'll be invited to enrol at the College in the summer.

If you didn't do as well as you hoped in your exams – don't panic! We will work to offer you a more appropriate course, often leading to your first choice at a later date. If you did better than you expected, we will discuss with you the option of starting on a higher level.

ENGLISH & MATHS

English and Maths are particularly valued by employers and are important for progression onto higher levels of study. When applying for a job or College course you'll be asked to provide evidence of your exam results.

GCSE Maths and English are essential qualifications and will form part of your Full-time programme unless you have already achieved grade 4 or above.

We also offer a variety of ways to support your learning through mentoring classes, revision breakfast clubs and fun competitions.

GEMS

Our GCSE re-sit programme is designed for school leavers looking to improve their GCSE grades or who maybe missed the opportunity to sit the exams. Subjects include Maths, English, Combined Science, Computer Science plus a Project-based qualification.

YOUR STUDY PROGRAMME

As a 16-18 year old student you will join a study programme which is designed to give you the skills needed to progress on to further study or a job.



YOUR STUDY PROGRAMME WILL COMBINE:

Lessons, Tutorials, English & Maths (unless you already have GCSEs at grade 4 or above), work experience and enrichment activities.

UCAS POINTS

T Levels and Level 3 Extended Diplomas are equivalent to 3 A Levels and will give you valuable UCAS points for university entry.

ENTRY REQUIREMENTS GUIDE

Typical entry requirements apply to students aged 16-18.

For Adults aged 19+, equivalent qualifications and relevant work experience will be considered.

Applications which do not meet the formal entry criteria may be considered on an individual basis.

	ENTRY LEVEL 1-3	LEVEL 1	LEVEL 2	LEVEL 3
DURATION	1 YEAR	1 YEAR	1 YEAR	2 YEARS
TYPICAL ENTRY REQUIREMENTS	No formal qualifications needed	4 GCSEs at grade 2 or above including English and Maths (considerations made on a case-by-case basis)	5 GCSEs at grade 3 or above including English and Maths OR A Level 1 qualification plus English and Maths at the appropriate level	5 GCSEs at grade 4 or above including English and Maths* OR A Level 2 qualification plus GCSE grade 4 or equivalent in English and Maths
HOW & WHAT YOU'LL LEARN	Practical, hands-on learning that will develop your skills, knowledge and confidence	Hands-on learning that will provide you with an introduction to an industry or subject area of interest	Develop core theoretical knowledge, in the classroom and practical skills in your chosen area	A blend of practical, career focused skills and academic study in your chosen area, to prepare you for employment or higher education
PROGRESSION	<ul style="list-style-type: none"> ▶ Level 1 ▶ Supported Internship ▶ Employment 	<ul style="list-style-type: none"> ▶ Level 2 Diploma ▶ Level 2 Apprenticeship ▶ Supported Internship ▶ Employment 	<ul style="list-style-type: none"> ▶ Level 3 Diploma ▶ Level 3 Apprenticeship ▶ Employment 	<ul style="list-style-type: none"> ▶ HNC or HND ▶ University Level Course ▶ Higher Apprenticeship ▶ Employment

*For certain courses, more specific entry criteria may apply. See website for details.

GET THE MOST FROM COLLEGE LIFE

College isn't all about what you do in the classroom. There's a range of exciting opportunities to explore when you're not studying. Taking part in an enrichment activity is a great way to make new friends, learn new skills and have fun!

How you can join in:

- ▶ **ACTIVITY PROGRAMME** – each term we offer a range of activities including clubs, sports, chillout activities and much more
- ▶ **FRESHERS' FAIR** – discover more about College life, grab some freebies and have some fun!
- ▶ Other fun events planned throughout the year



To find out more about enrichment visit www.johnruskin.ac.uk/enrichment



BY STUDENTS FOR STUDENTS

John Ruskin College's Students' Union is there to support you.

We work hard to provide a wide range of interesting activities for students to take part in, but we're always open to new suggestions and ideas for activities you would like to do.

The SU meets with the College Senior Leadership Team to help evolve the College experience for all, ensuring students' views and opinions are included every step of the way.

AIMS AND RESPONSIBILITIES

- ▶ To ensure the student body has a running voice throughout the College
- ▶ Fundraising for charity and for extra facilities for students
- ▶ To strengthen the community spirit within the College

To find out more visit www.johnruskin.ac.uk/student-union



T-LEVELS

THE NEXT LEVEL QUALIFICATION

T Levels are Level 3 technical qualifications equivalent to a Level 3 vocational study programme or 3 A Levels, designed in collaboration with the best employers to meet the skills needs of future workforces.

These 2 year courses combine a mixture of College-based learning and 'on-the-job' experience during an industry placement of at least 315 hours (approximately 45 days).

ENTRY REQUIREMENTS

Similar to A Levels, you will need 5 GCSEs grade 9-4 including English and Maths; or a Level 2 diploma/ extended certificate.

YOUR PROGRESSION OPTIONS

At the end of the two-year course, you will receive an overall grade (Pass, Merit, Distinction, Distinction*) and you will gain UCAS points equivalent to taking three A Levels. Your progression options include:

- ▶ Skilled employment
- ▶ Higher level study including university
- ▶ Higher level apprenticeships

FOR MORE INFORMATION:
Scan the QR code or visit:
www.johnruskin.ac.uk/tlevels



80%
CLASSROOM

20%
WORKPLACE

T Level Subjects at JRC:

BUSINESS & ADMINISTRATION

CONSTRUCTION

DIGITAL

EDUCATION & CHILDCARE

ENGINEERING

HEALTH

"I realised that to excel in the construction industry, you need a solid understanding of the laws, regulations, and documentation that are integral to the field. That's why I opted for a T Level. It allowed me to gain essential knowledge while still maintaining a balance between work and education."

CARLA
Design, Surveying & Planning
for Construction // T Level



Apprenticeships

Earn while you learn, build your skills and gain a nationally recognised qualification.

WHAT IS AN APPRENTICESHIP?

Apprenticeships combine real work with training and study. Being an apprentice isn't the same as being a college or university student. You will be putting what you learn straight into practice. Apprentices don't have to pay tuition fees either.

WHO CAN BECOME AN APPRENTICE?

To start an Apprenticeship you will need to secure employment, be aged 16+ and not be in full-time education.

YOUR NEXT STEPS

After completing an Apprenticeship, your employer may offer you a permanent role although this is not guaranteed.

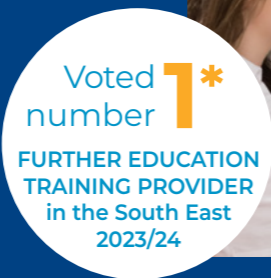
We offer Apprenticeship programmes from **LEVEL 2 to LEVEL 6** in a wide range industries:

- ▶ ANIMATION
- ▶ AVIATION
- ▶ BUSINESS & ACCOUNTING
- ▶ CHILDCARE & EARLY YEARS
- ▶ CONSTRUCTION
- ▶ CUSTOMER SERVICES
- ▶ EDUCATION & TRAINING
- ▶ ENGINEERING
- ▶ HAIRDRESSING & BARBERING
- ▶ HEALTH & SOCIAL CARE
- ▶ IT & DIGITAL
- ▶ QUANTITY SURVEYING (RICS Accredited BSc Hons)

For more information get in touch with our Employer Services team:

✉ employerservices@johnruskin.ac.uk

☎ 020 8651 1131



**As voted by Apprentices in the RateMyApprenticeships Top 50 Training Providers for 2023-24*

“An Apprenticeship gave me the best experience possible whilst gaining a qualification! I’m not the biggest fan of sitting in a classroom all day, I’d much rather be earning money and working!”

BRADLEY
Business Administration Apprenticeship



SEARCH VACANCIES

Scan the QR code to view apprentice vacancies.

UNIVERSITY LEVEL COURSES

Higher Education is an investment in your future. We offer a range of courses designed to equip you with the skills and experience that employers are looking for, to help you stand out from the crowd and progress in your career.

WHY CHOOSE US?

- ▶ Excellent facilities
- ▶ Great transport links from London and across the South East
- ▶ Industry experienced tutors
- ▶ Lower fees than universities
- ▶ Small class sizes
- ▶ Flexible entry requirements

OUR QUALIFICATIONS INCLUDE:

- ▶ Degree Programmes (BA (Hons))
- ▶ Foundation & Top-Up Degrees (FdA/FdSc)
- ▶ Higher National Diplomas (HNDs)
- ▶ Higher National Certificates (HNCs)
- ▶ Higher & Degree Apprenticeships

For more information about university level courses visit:
www.esc.ac.uk/higher-education-at-esc



WHO WE WORK WITH

Our Foundation and Degree programmes are awarded by the University of Chichester, recently ranked 10th for Student Satisfaction by the Complete University Guide 2023. We also work with other selected institutions to provide high quality teaching and qualifications. Our courses include:

CONSTRUCTION

Construction & The Built Environment:

- Building Services Engineering HNC / HND Top-Up
- Construction HNC
- Construction Management HND Top-Up
- Civil Engineering HNC / HND Top-Up
- Surveying HNC / HND Top-Up
- Quantity Surveying BSc (Hons)

CREATIVE

Make-Up, Special Effects & Hair for Media & Performance FdA / BA (Hons) Top-Up

DIGITAL & IT

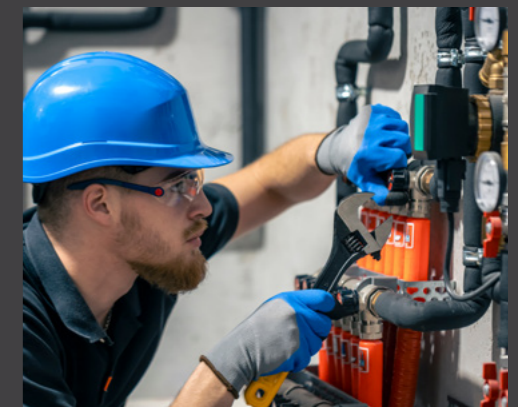
Cloud Computing FdSc
Cyber Security FdSc
Web Technologies & Development FdSc

EARLY YEARS

Early Years FdA

ENGINEERING

Electrical/Electronic Engineering HNC / HND Top-Up
Electrical Power Networks & Distribution Engineering HNC
Embedded Electronic Engineering HND Top-Up
Engineering (General) HNC / HND Top-Up
Mechanical Engineering HNC / HND Top-Up



**SEARCH
HE COURSES**
Scan the QR code
to view and apply.

Access to Higher Education

If you have taken a break from education and are eager to return, or if you need to gain the required qualifications, an Access to HE course is designed to prepare adults (19+) for studying at a higher level.

This one-year intensive course is designed to help make your transition to university study easier. With small class sizes and plenty of individual support, we will help you to reach your goal.

The course is broken down into manageable units focusing on giving you the study skills and knowledge required for university, perfect for those who have been out of education for some time.

Course Highlights

Access to Higher Education courses are widely recognised by UK universities.

You will build the skills and confidence to prepare for the demands of undergraduate studies.

A great way to prepare adults 19+ who would like to study higher education but do not have the necessary qualifications.

Progression Pathways

This intensive course is equivalent to 3 A levels and will prepare you for studying a university level course.

UNIVERSITY – A Level 3 qualification will allow you to progress to university. Our Careers team will assist you with your UCAS application and support you to choose the right university and degree for you.

Career ideas for you

- ▶ Registered Nurse
- ▶ Nurse Practitioner
- ▶ Occupational Therapist
- ▶ Midwife
- ▶ Radiographer
- ▶ Physiotherapist
- ▶ Podiatrist
- ▶ Dental Nurse

Speak to Client Services about financial support for adults (19+).



Courses at JRC

Access to Nursing & Health Related Professions

L3

See page 12-13 for entry requirements

Did you know...

- ▶ Nursing is the UK's most employable type of degree, with 94% of students getting a job within six months of finishing their course.
- ▶ Nursing degree apprenticeships are available with some employers.
- ▶ Nursing is one of the most dynamic and rewarding roles in the NHS.



Scan here to find out more about these courses or to apply.

Animal Management

If you are interested in working with animals, our animal management course will provide you with hands-on opportunities to work with a variety of small mammals and reptiles.

This course equips you with essential skills for working in the animal care industry, including:

- ▶ Feeding and watering animals
- ▶ Maintaining animal accommodation
- ▶ Handling and restraining
- ▶ Performing health checks

Additionally, you will develop personal attributes such as time management, teamwork, and independent study.

Course Highlights

Benefit from industry exposure on an integrated work placement facilitated by our tutors.

Gain real-world insight with practical, hands-on sessions.

Hear from external industry speakers, such as animal rescue centres or zoos to enrich your understanding of the field.

Progression Pathways

IN COLLEGE – We will support your progression through College.

EMPLOYMENT – You may start working in an animal care based career or start an Apprenticeship.

Career ideas for you

- ▶ Animal Care Worker
- ▶ Animal Technician
- ▶ Beekeeper
- ▶ Farm Worker
- ▶ Gamekeeper
- ▶ Dog Groomer
- ▶ Zookeeper
- ▶ Pet Shop Assistant



Courses at JRC

Animal Management

L1

See page 12-13 for entry requirements

Did you know...

“Working with animals is so rewarding! This course will give students the chance to get hands-on experience with all our animals, learning about welfare, conservation, health, and behaviour.

The supportive environment at JRC ensures that every student gets the guidance and encouragement they need to succeed in their Animal Management journey.”

HARRIET
Animal Management Lecturer



Scan here to find out more about these courses or to apply.

Business & Finance

There's a huge range of career paths in the business industry such as HR, marketing, finance and retail, so gaining knowledge, understanding and skills will help you realise your ambitions.

Our work-related courses combine classroom learning, employer talks as well as trips to develop an in-depth knowledge of your chosen subject.

Our tutors have a wealth of industry experience so you will gain a range of transferrable skills to prepare for your future career, whether you want to climb the corporate ladder or start your own business.

Course Highlights

Learn in state-of-the-art classrooms and IT suites.

You will benefit from working on 'live' projects with local employers and entrepreneurs.

Hear from external industry speakers through employer seminars and presentations across various industries.

Progression Pathways

IN COLLEGE – We will support your progression through College.

EMPLOYMENT – You may start working in a business or finance based career or start an Apprenticeship.

UNIVERSITY – A Level 3 qualification will allow you to progress to university. Our Careers team will assist you with your UCAS application and support you to choose the right university and degree for you.

Career ideas for you

- ▶ Administrator
- ▶ Manager
- ▶ Analyst
- ▶ Finance Assistant
- ▶ Human Resources
- ▶ Marketing Executive
- ▶ Entrepreneur / Business Owner
- ▶ Sales Representative



Courses at JRC

Business

L1 L2 L3

Management & Administration

i-LEVEL L3

See page 12-13 for entry requirements

My JRC story...

“My tutors are extremely supportive and give good guidance. One of my favourite modules was Employment Law as I plan to be a lawyer in the future. I also enjoyed the Developing a Marketing Campaign topic.”

AKEELES
Business Level 3



Scan here to find out more about these courses or to apply.

Construction Trade Skills

The construction industry is a fast-paced sector with a wide variety of career opportunities. At ESC, we have fantastic industry-standard facilities so you can learn the skills required in this growing sector.

If you are looking for a practical, hands-on career, then a construction course would provide you with skills and experience to support you in the industry.

If you aren't sure what you want to do, you can start on a Level 1 course allowing you to try all of the trades before deciding what to specialise in.

Our strong links to employers and industry-experienced tutors will allow you to gain the necessary practical skills and theoretical knowledge needed to excel in your chosen career.

Course Highlights

You will develop technical skills and knowledge in our purpose-built workshops.

You'll benefit from working collaboratively and take part in work-based projects.

Hear from external industry speakers, such as local employers and industry professionals.

Progression Pathways

IN COLLEGE – We will support your progression through College.

EMPLOYMENT – You may start working in a construction based career or start an Apprenticeship.

UNIVERSITY – A Level 3 qualification will allow you to progress to university. Our Careers team will assist you with your UCAS application and support you to choose the right university and degree for you.

Career ideas for you

- ▶ Construction Site Worker
- ▶ Carpenter
- ▶ Decorator
- ▶ Plumber
- ▶ Electrician
- ▶ Site Manager
- ▶ Construction Engineer
- ▶ Surveyor



Courses at JRC

Carpentry & Joinery L1

Construction Multi-Skills L1

Electrical Installation L1 L2

Painting & Decorating L1 L2

Plumbing L1 L2

See page 12-13 for entry requirements

My JRC story...

“The best thing about the course is doing what I love – being creative, practical and making things. My tutor is brilliant – he really knows his stuff!”

BEN
Carpentry & Joinery Level 1



Scan here to find out more about these courses or to apply.

Creative Arts

We offer you the best possible start to a career in the creative arts. You'll enjoy the freedom to develop your creativity and let your imagination run wild!

You will have access to a range of excellent studio facilities and the latest resources to develop your creative potential including:

- ▶ Art studios
- ▶ Multimedia suites
- ▶ Mac suites with industry standard software
- ▶ Film production studio

Course Highlights

You will go on a range of cultural and educational trips and take part in competitions.

Creative assignments and projects will help you build a portfolio.

Students work on live projects with a range of employers and collaborate with local artists and communities.

You will get to showcase your work at the End of Year Exhibition.

Progression Pathways

IN COLLEGE – We will support your progression through College.

EMPLOYMENT – You may start working in a Creative career or start an Apprenticeship.

UNIVERSITY – A Level 3 qualification may allow you to progress to university or art school. Our Careers team will assist you with your UCAS application and support you to choose the right university and degree for you.

Career ideas for you

- ▶ Animator
- ▶ Advertising Art Director
- ▶ Graphic Designer
- ▶ Visual Effects (VFX) Artist
- ▶ Artist / Illustrator
- ▶ Storyboard Artist
- ▶ Fashion Designer
- ▶ Motion Graphics Designer
- ▶ Interior Designer
- ▶ Architectural Designer
- ▶ Photographer
- ▶ UI/UX Designer

Croydon Stands Tall 2023

"I am so excited my design has been chosen to represent John Ruskin College. It's a great way to showcase my work and become known as an artist!"

KELVINE
Art & Design Level 2



Courses at JRC

Art, Design & Media

L1

Art & Design

L2

Creative Media

L2

Creative Practice;
Art, Design & Communication

L3

Creative Media Production
& Technology

L3

eSports & Digital Media

L3

See page 12-13 for entry requirements

Did you know...

We work in partnership with the University of the Arts London (UAL) ranked 2nd in the world for art and design education.*

ual: awarding body

*QS World University Rankings by Subject 2024



Scan here to find out more about these courses or to apply.

Digital & IT

Digital and IT is a rapidly growing employment sector with a growing demand for professionals who can provide technical support, develop digital experiences and ensure cyber security. These industry-tailored courses provide an ideal route to employment or progression to university level study.

To gain the skill-set which is highly sought after by employers, you'll learn both theory and practical skills, exploring different areas including programming, networking, databases, and cybersecurity.

To prepare you for working with the latest technology in the business world, you will have access to:

- ▶ State-of-the-art IT suites with the latest software
- ▶ A dedicated hacking suite

Course Highlights

There will be opportunities to work on 'live' projects with local employers and entrepreneurs.

Access regular CV, career development and UCAS support.

You will benefit from employer seminars and presentations across various industries.

Progression Pathways

IN COLLEGE – We will support your progression through College.

EMPLOYMENT – You may start working in a digital or IT based career or start an Apprenticeship.

UNIVERSITY – A Level 3 qualification will allow you to progress to university. Our Careers team will assist you with your UCAS application and support you to choose the right university and degree for you.

Career ideas for you

- ▶ IT Technician
- ▶ 3D Printing Technician
- ▶ Games Developer / Tester
- ▶ Data Scientist
- ▶ Cyber Security Co-ordinator
- ▶ Network Engineer
- ▶ Software Developer
- ▶ Technical Architect



Courses at JRC

Information & Creative Technology

L1

Computing

L3

Digital Technology (Foundation)

i-LEVEL L2

Digital Production, Design & Development

i-LEVEL L3

See page 12-13 for entry requirements

My JRC story...

"I have learned about the IT industry and the different career opportunities available. I especially enjoyed learning about the fundamentals of cabling, coding and WiFi. The course has helped me confidently decide what I'd like to do in the future."

NIKITA
IT Level 3



Scan here to find out more about these courses or to apply.

Early Years & Childcare

Working with small children is a job that makes a big difference by helping to give children the best start in life. For a rewarding career in early years and childcare, gaining a qualification is the first step.

You will gain an introduction to caring for children aged 0-5 years, as well as working with children up to 7 years. You will also develop a range of skills and learn about:

- ▶ Child development and behaviour
- ▶ Safeguarding and wellbeing
- ▶ Care routines
- ▶ Working with others

Course Highlights

Benefit from working with industry-experienced tutors, ensuring you get the required support.

You will undertake a work placement which will give you valuable experience of different childcare settings increasing your employability skills.

An NCFE CACHE qualification is a hallmark of quality, and assures employers that their workforce has the right knowledge, skills and behaviours to excel in their professional responsibilities.

Progression Pathways

IN COLLEGE – We will support your progression through College.

EMPLOYMENT – You may start working in an early years or childcare based career or start an Apprenticeship.

UNIVERSITY – A Level 3 qualification will allow you to progress to university. Our Careers team will assist you with your UCAS application and support you to choose the right university and degree for you.

Career ideas for you

- ▶ Nursery / Preschool Assistant
- ▶ Childcare Worker
- ▶ Nanny
- ▶ Childminder
- ▶ Family Support Worker
- ▶ Child Development Consultant
- ▶ Teaching Assistant



Courses at JRC

Early Years Practitioner

L2

Education & Childcare

i-LEVEL L3

See page 12-13 for entry requirements

My JRC story...

"I like the way the course is structured into different units and enjoy working as a group on tasks and brainstorming ideas.

My tutor is great and gives very useful feedback. It really helps that she's worked in the industry so has first-hand knowledge."

ALEX
Childcare Level 3



Scan here to find out more about these courses or to apply.

Engineering

The engineering industry accounts for nearly a 5th of the total UK workforce, offering a wide range of career options. If you have an interest in science, technology and construction then our engineering courses will allow you to develop the core skills and knowledge to start your career journey.

Our Level 2 qualification will introduce you to many aspects of manufacturing engineering relating to the design of products and how the industry works. You will learn how to use lathes and mills as well as how to produce Computer Aided Design (CAD) drawings.

The T Level is a 2 year course, ideal for those interested in a career in electrical/electronic engineering and combines:

- ▶ Classroom study
- ▶ Practical learning
- ▶ Industrial placement of 315 hours (min)

Course Highlights

Courses are delivered by industry-experienced tutors.

Develop your engineering knowledge, skills, imagination and experience.

Learn with industry standard software for engineering design.

Progression Pathways

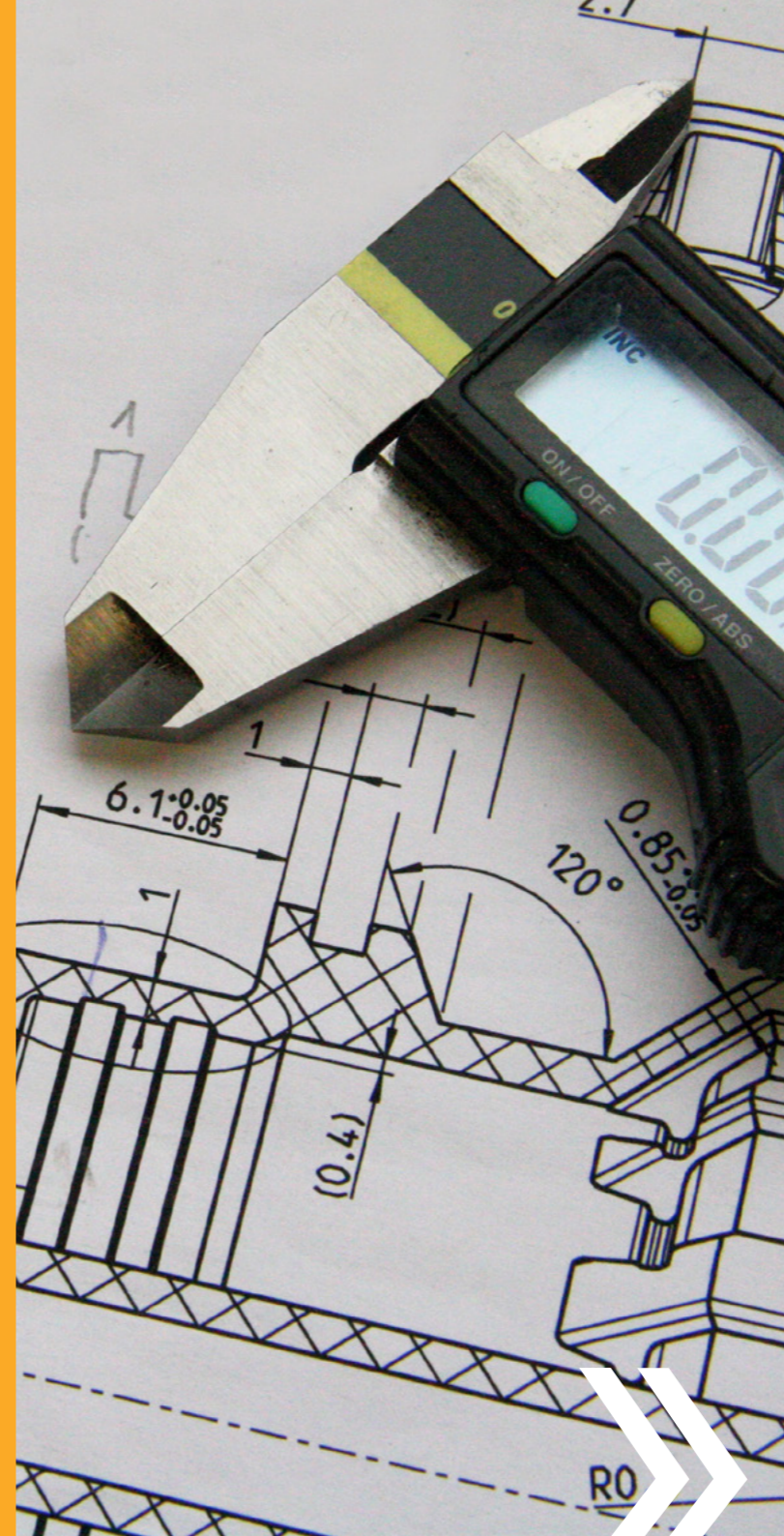
IN COLLEGE – We will support your progression through College.

EMPLOYMENT – You may start working in an engineering based career or start an Apprenticeship.

UNIVERSITY – A Level 3 qualification will allow you to progress to university. Our Careers team will assist you with your UCAS application and support you to choose the right university and degree for you.

Career ideas for you

- ▶ Mechanical Engineer
- ▶ Civil Engineer
- ▶ Electrical Engineer
- ▶ Structural Engineer
- ▶ Robotics Engineer
- ▶ Industrial Engineer
- ▶ Control System Engineer
- ▶ Renewable Energy Engineer



Courses at JRC

Engineering

L2

Design & Development
for Engineering and
Manufacturing
(Electrical & Electronic)

T-LEVEL L3

See page 12-13 for entry requirements

My JRC story...

“I have always enjoyed learning how to construct and manufacture things, so took an interest in this course. I enjoy doing group work with my peers and the support from both of my teachers was excellent! I am hoping to study Engineering at university.”

NATHAN
Engineering Level 2



Scan here to find out more about these courses or to apply.

Hair, Beauty, Make-Up & Spa

The hair and beauty industry is a diverse, multi-billion pound industry, always looking for the next trend or new treatments. Working in this sector is a great choice if you have a creative flair and good people skills.

You will gain hands-on experience in our state-of-the-art professional salons and studios. Our industry professional tutors and staff will support your training to take your talent to the next level.

Each course is designed to develop your skills and knowledge in your chosen discipline and includes:

- ▶ An introduction to each sector
- ▶ Treatments and techniques
- ▶ Client care and communication skills
- ▶ Health and safety practice

Course Highlights

Learn in industry standard workshops and salons.

Our professional training salon is open to the public, staff and students.

You will have the opportunity to showcase your work and compete in competitions, both internally and externally.

Progression Pathways

IN COLLEGE – We will support your progression through College.

EMPLOYMENT – You may start working in a hair, beauty, make-up or spa based career or start an Apprenticeship.

UNIVERSITY – A Level 3 qualification will allow you to progress to university. Our Careers team will assist you with your UCAS application and support you to choose the right university and degree for you.

Career ideas for you

- ▶ Hairdresser
- ▶ Barber
- ▶ Make-Up Artist
- ▶ Eyelash Technician
- ▶ Skincare Specialist
- ▶ Nail Technician
- ▶ Spa Therapist
- ▶ Beauty Consultant
- ▶ Aromatherapist



Courses at JRC

Beauty Therapy L2

Body & Spa Therapy L3

Hair & Beauty L1

Hair & Media Make-Up L2 L3

Hairdressing L2 L3

See page 12-13 for entry requirements

My JRC story...

“The best part of my course is interacting with customers and meeting new people. I also enjoyed trips to Salon International and Beauty Olympia, two industry shows in London, where we watched demonstrations, saw the latest trends and got lots of free samples!”

MEA
Hairdressing Level 2



Scan here to find out more about these courses or to apply.

Health & Social Care

A career in the health and social care sector may be challenging but immensely rewarding, enabling you to make life-changing differences for the people you work with.

Whether you want to work with adults with disabilities or health problems, or those needing other types of support, our Health & Social Care courses will give you the knowledge and experience to start your career. Your studies will include:

- ▶ Listening, interpersonal and communication skills
- ▶ Specialist skills
- ▶ Healthy living
- ▶ Health, safety and environmental regulations

Course Highlights

Our courses are taught by skilled and dedicated tutors with industry knowledge.

We work with local employers including Surrey Care Association and First Community Healthcare.

You will gain a valuable insight into the various roles across the caring profession.

Progression Pathways

IN COLLEGE – We will support your progression through College.

EMPLOYMENT – You may start working in a Health & Social care based career or start an Apprenticeship.

UNIVERSITY – A Level 3 qualification will allow you to progress to university. Our Careers team will assist you with your UCAS application and support you to choose the right university and degree for you.

Career ideas for you

- ▶ Healthcare Assistant
- ▶ Support Worker
- ▶ Social Worker
- ▶ Nursing Assistant
- ▶ Residential Care Worker
- ▶ Mental Health Support Worker
- ▶ Community Outreach Worker



Courses at JRC

Health & Social Childcare

L1

Health & Social Care

L2

Health

i-LEVEL L3

See page 12-13 for entry requirements

My JRC story...

“From my experience, teachers are always ready to help and the Careers Team gives good advice about work experience. There is also good Mental Health support with a relaxing space in the Hub if you need it.”

REJOICE
Health & Social Care Level 3



Scan here to find out more about these courses or to apply.

Skills for Life ESOL

If English is not your first language, we offer a number of ESOL (English for Speakers of Other Languages) courses for students who need support with reading, writing, listening and speaking in English.

Our ESOL tutors will help you learn and enhance your grammar and vocabulary for work, study and home life.

Whether you're new to the English language or looking to enhance your existing skills, studying an ESOL course will provide you with the tools and confidence to communicate with friends and employers, pursue further education and enjoy everyday life in the UK.

Course Highlights

You will develop effective personal skills for social interaction through spoken language as well as body language.

Career planning and making applications for other College full-time courses or future employment.

You will also be supported in gaining Maths Functional Skills or GCSE qualifications.

Progression Pathways

IN COLLEGE – We will support your progression through College onto a Full-time vocational course.

EMPLOYMENT – You will increase your employment prospects by studying an ESOL course or start an Apprenticeship.

ESOL courses will support you with:

- ▶ Speaking, listening, reading and writing skills
- ▶ Grammar, pronunciation and intonation
- ▶ Healthy living
- ▶ Qualities and attitudes for learning and work
- ▶ Confidence in daily life
- ▶ Cultural engagement
- ▶ Future study and work readiness



Courses at JRC

ESOL (English for Speakers of Other Languages)

E1 E2 E3 L1

See page 12-13 for entry requirements

MyJRC story...

“I chose this course because I wanted to understand the language and culture of people with different backgrounds.

My teachers are helpful and have encouraged and supported me to be the best I can be.

I'm planning to study Health & Social Care at JRC then further my studies at university.”

KADIATOU
ESOL Entry Level 3



Scan here to find out more about these courses or to apply.

Skills for Life SEND

Life Skills SEND courses are specifically designed to meet the needs of students who have a learning difficulty and/or disability, and to help them reach their potential.

Our Life Skills SEND programmes are designed to support you to increase your confidence, self-esteem, self-awareness and independence. You could potentially progress onto higher level courses across the College.

We will help you develop independent living and employability skills that will increase your future opportunities and help you in your everyday life.

Course Highlights

Our SEND team work closely with parents and students to develop specialist programmes.

Specialist tutors and assistants are on hand to support students with Special Educational Needs and Disabilities.

We offer tailored and specific support to meet a wide range of personal and educational needs.

The Hive

ADDITIONAL LEARNING SUPPORT AREA

Students with additional learning needs will enjoy the dedicated space we call The Hive. Equipped with comfortable seating, computers and a calming bean bag area, it's a great space for quiet learning and students can receive extra support from our specialist staff.

Courses cover:

- ▶ Art and crafts
- ▶ Communication skills
- ▶ Computer skills
- ▶ Cooking and healthy living
- ▶ Developing skills for work and Independent living
- ▶ Numeracy and literacy
- ▶ Team work



Courses at ESC

LEAP

-

Preparing for Independent Living & Employment

E3

Skills for Independence & Work

E3

Supported Internship

L1

See page 12-13 for entry requirements

My JRC story...

“I have been learning about time management, how to write a CV and independent living. The teachers are always there for me when I need a chat or a break away. They also help me when I am struggling with work, and they offer additional support.”

RANDOLPH
Preparing for Independent Living & Employment Entry Level 3



Scan here to find out more about these courses or to apply.

GETTING TO THE COLLEGE

Our campus is situated in South Croydon and is easy to get to. We encourage students to use public transport.

WALKING

The College is a 40-minute walk from Addington Central Parade and 20-minute walk from Addington Road, Selsdon.

CYCLING

Covered cycle racks are available on-site.

TRAM

Line 3 runs from central Croydon via Gravel Hill to New Addington – alight at Gravel Hill.

BUS

Bus 64 and 359 stops directly outside the College. Buses 130, 314, 353, 433 and 466 stop near the College.

TRAIN

Accessible from East Croydon, West Croydon and South Croydon stations.

Need help with travel costs? Speak to Client Services to find out about student fares and bursaries

COURSE INDEX

ACCESS TO HIGHER EDUCATION

Access to Nursing & Health
Related Professions Level 3.....22-23

ANIMAL MANAGEMENT

Animal Management Level 1..... 24-25

BUSINESS & FINANCE

Business Level 1.....26-27

Business Level 226-27

Business Level 326-27

Management & Administration T Level26-27

CONSTRUCTION

Carpentry & Joinery Level 1..... 28-29

Construction Multi-Skills Level 1 28-29

Electrical Installation Level 1..... 28-29

Electrical Installation Level 2 28-29

Painting & Decorating Level 1..... 28-29

Painting & Decorating Level 2 28-29

Plumbing Level 1..... 28-29

Plumbing Level 2 28-29

CREATIVE ARTS

Art, Design & Media Level 1 31-32

Art & Design Level 2.....31-32

Creative Media Level 231-32

Creative Practice; Art, Design & Communication Level 331-32

Creative Media Production & Technology Level 3.....31-32

eSports & Digital Media Level 331-32

DIGITAL & IT

Information Technology Level 1.....32-33

Computing Level 3.....32-33

Digital Technology Level 2 T Level32-33

Digital Production, Design & Development T Level.....32-33

EARLY YEARS & CHILDCARE

Early Years Practitioner Level 2 34-35

Education & Childcare T Level 34-35

ENGINEERING

Engineering Level 2.....36-37

Design & Development for Engineering & Manufacturing (Electrical & Electronic) T Level36-37

HAIR, BEAUTY, MAKE-UP & SPA

Beauty Therapy Level 2..... 38-39

Body & Spa Therapy Level 3 38-39

Hair & Beauty Level 1..... 38-39

Hair & Media Make-Up Level 2 38-39

Hair & Media Make-Up Level 3..... 38-39

Hairdressing Level 2..... 38-39

Hairdressing Level 3..... 38-39

HEALTH & SOCIAL CARE

Health & Social Childcare Level 1..... 40-41

Health & Social Care Level 2 40-41

Health T Level 40-41

SKILLS FOR LIFE – ESOL

ESOL Entry Level 1, 2 & 3..... 42-43

ESOL Level 1 42-43

SKILLS FOR LIFE – SEND

LEAP 44-45

Preparing for Independent Living & Employment Entry Level 3..... 44-45

Skills for Independence & Work Entry Level 3..... 44-45

Supported Internship Level 1 44-45



VISIT US

TUES
17 SEPT
5pm – 8pm

SAT
5 OCT
10am – 1pm

THURS
7 NOV
5pm – 8pm

WED
12 FEB
5pm – 7.30pm

WED
18 JUNE
5pm – 7.30pm

Book online at
www.johnruskin.ac.uk/events

JOHN RUSKIN COLLEGE

Selsdon Park Road
South Croydon
CR2 8JJ

Email: clientservices@johnruskin.ac.uk

Switchboard: 020 8651 1131

www.johnruskin.ac.uk



DISCLAIMER

Every effort has been made to ensure that the details included in this guide are up-to-date and accurate at the time of printing. However, the College reserves the right to alter or cancel courses, their content, entry requirements or other details should circumstances dictate.